



## Feeling Sick?

Stay home when you are sick!

If you feel unwell or have the following symptoms  
**please leave the building and contact your health care provider.**  
Then follow-up with your supervisor.

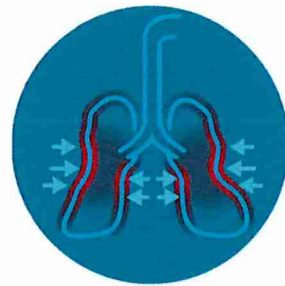
**DO NOT ENTER if you have:**



**FEVER**



**COUGH**



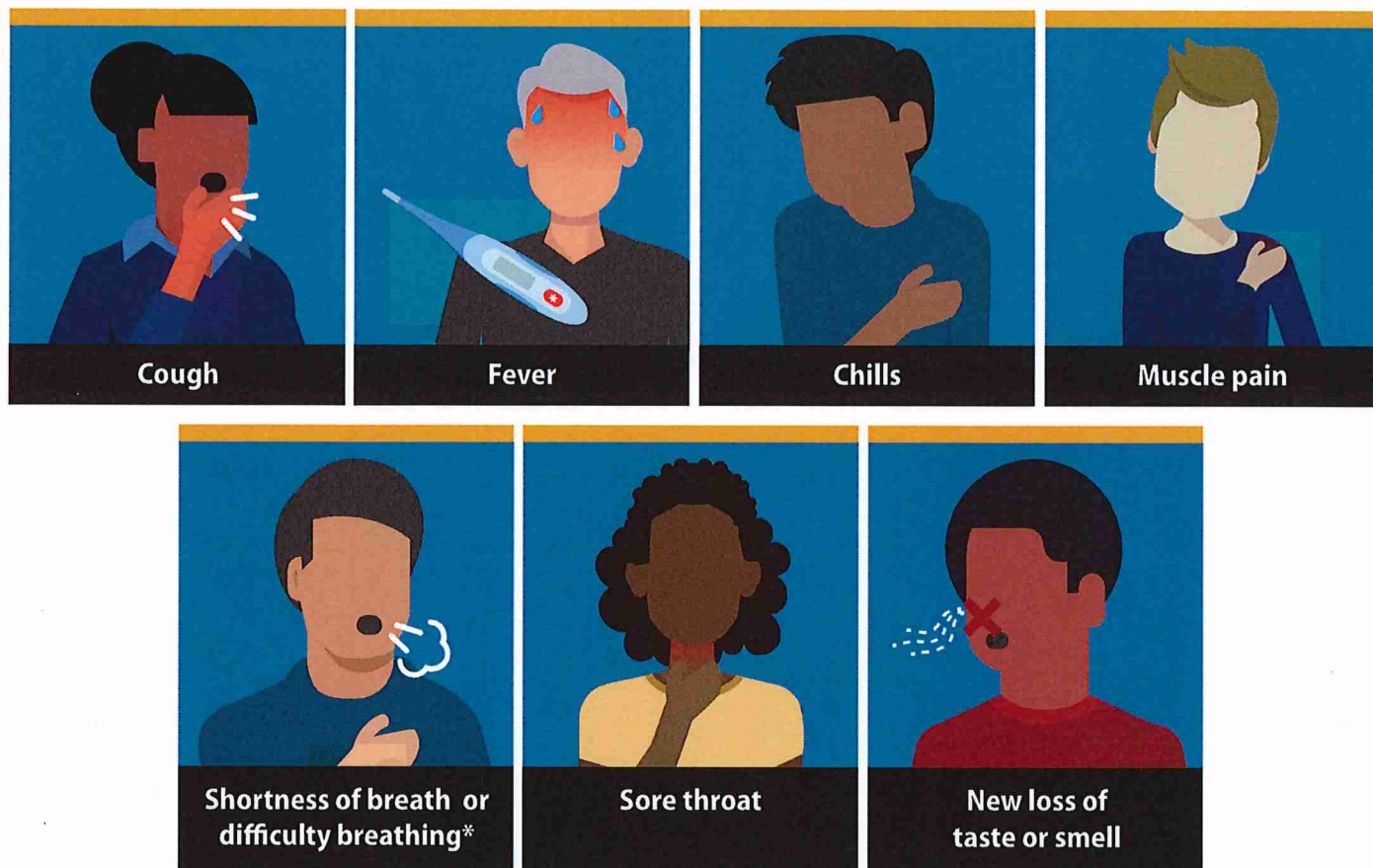
**SHORTNESS OF  
BREATH**



[cdc.gov/CORONAVIRUS](https://cdc.gov/CORONAVIRUS)

# Symptoms of Coronavirus (COVID-19)

Know the symptoms of COVID-19, which can include the following:



Symptoms can range from mild to severe illness, and appear 2-14 days after you are exposed to the virus that causes COVID-19.

**\*Seek medical care immediately if someone has emergency warning signs of COVID-19.**

- Trouble breathing
- Persistent pain or pressure in the chest
- New confusion
- Inability to wake or stay awake
- Bluish lips or face

This list is not all possible symptoms. Please call your medical provider for any other symptoms that are severe or concerning to you.



[cdc.gov/coronavirus](https://www.cdc.gov/coronavirus)